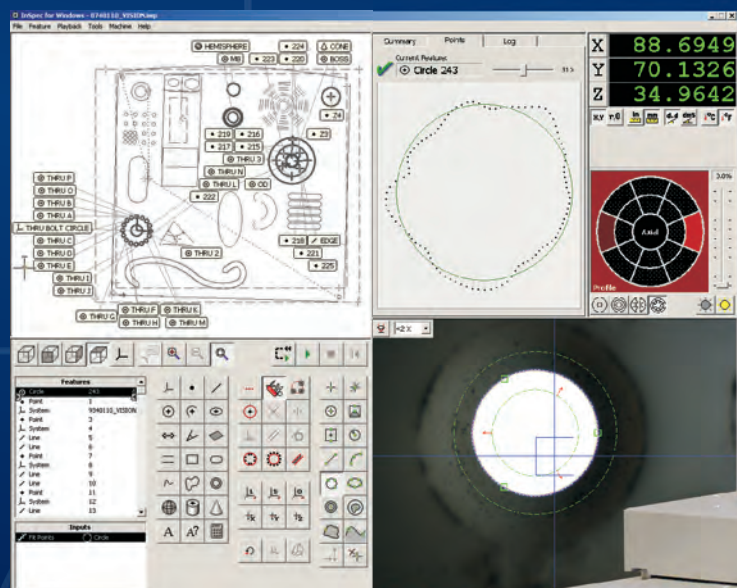


The Vertex 251 Multisensor Measurement System implements new technologies to provide speed and accuracy on a reliable and affordable measuring machine.

The system includes InSpec Metrology Software, a programmable optical zoom, 3x digital zoom, non-linear stage compensation, non-linear optics compensation, advanced LED lighting, and active temperature monitoring.

InSpec Metrology Software provides point-and-click simplicity, proprietary edge detection, advanced lighting control and calibration, multi-sensor integration, automated calibrations, and a clear display of measurement data and tolerances.



Model	Vertex 251
Measurement Capacity	250x160x160mm 10kg
Machine Dimensions	606x808x775mm 120kg
Scale Resolution	0.1 μ m
XY Accuracy, E ₂	2.0+L/250
Z Accuracy, E ₁	2.0+L/200
Zoom Range (Optical, Digital)	19.5:1 or 36:1 (6.5x or 12x, 3x)
Viewed Magnification	20x-390x 15x-540x

Specifications subject to change without notice.
Accuracy units are microns; length L units are mm.
Viewed magnification depends on monitor size and settings.

Machine

Precision X, Y, and Z Linear Ways
Motorized, Programable Zoom Lens
Proprietary Control and Amp Boards
Machine Resident Calibrations
Single USB Connection to Computer

Optics and Illumination

Digital, Hi-Res Video, Color or B&W
All LED Lighting - Surface, Profile and Axial
Multi-Ring, Multi-Sector Ringlights
Lighting Angles from 25 to 90 Degrees
6.5x or 12x Zoom Lens, Servo Controlled
Fast Optical Magnification Changes
Instant Digital Magnifications Changes

InSpec Metrology Software

Dynamic Sub-Pixel Image Processing
Point Edge Detection Tools
Multiple Point Edge Detection Tools
Video Overlays and Crosshair
On-Screen Scale
Feature Constructions
Tool Property Editing
Lights, Zoom, and Zone Editing
Instant Tool Editing on Stored Images
Advanced Dimensioning and Tolerancing
Automated Export Settings
Automatic Report Construction
Feature Summary Display
Data Points Display (Whisker Charts)
Feature Status Log Display
Fixed Windows Configuration
Image Capture and Export to JPG or BMP
User Configuration and Password Protection



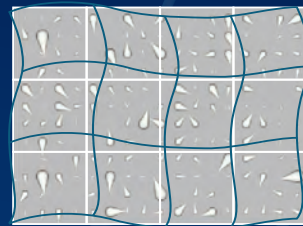
Touch Probe Ready

Automated Probe Calibrations
Automatic Approach Vectoring
Automated Docking



Laser Probe Ready

Point and Path Data
Graphical Range Display
Automated Laser Calibrations



Non-Linear Calibration

Standard for Stage and Optics
Ensures Highest Accuracy
Automated Procedures



Rotary Indexer Ready

Vertical and Horizontal Mounting
Automated Rotary Calibration
Faceplate and Chuck Included

Advanced Lighting

Intuitive Graphic Interface
Full Control to Enhance Edges
Long Life LEDs (approx 10,000 hrs)
InSpec Includes Lights Calibration



Part Program Compatibility

Programs can be transferred between other systems with InSpec.



RFM

Resources For Manufacturing, Inc.

P.O. Box 751432 Dayton, OH 45475

Ph: (937) 436-4699 Fx: (937) 436-9244

Sales@RFMInc.net www.RFMInc.net