

VERTEX MEASURING CENTER™



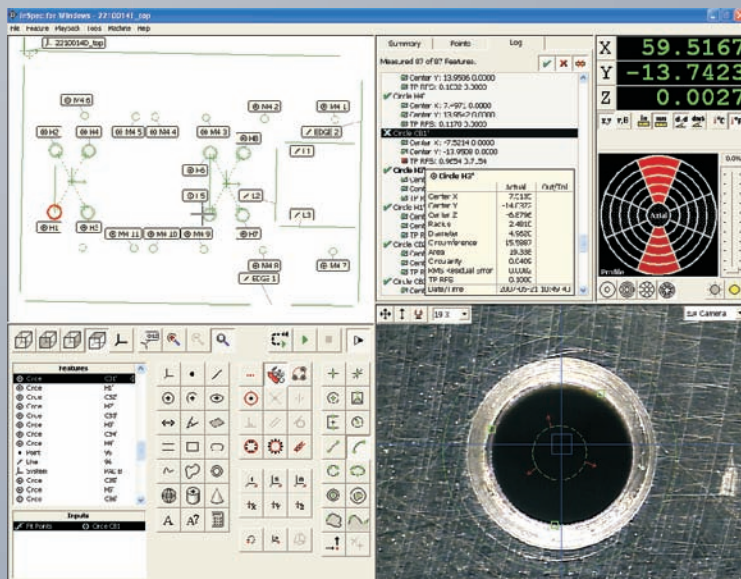
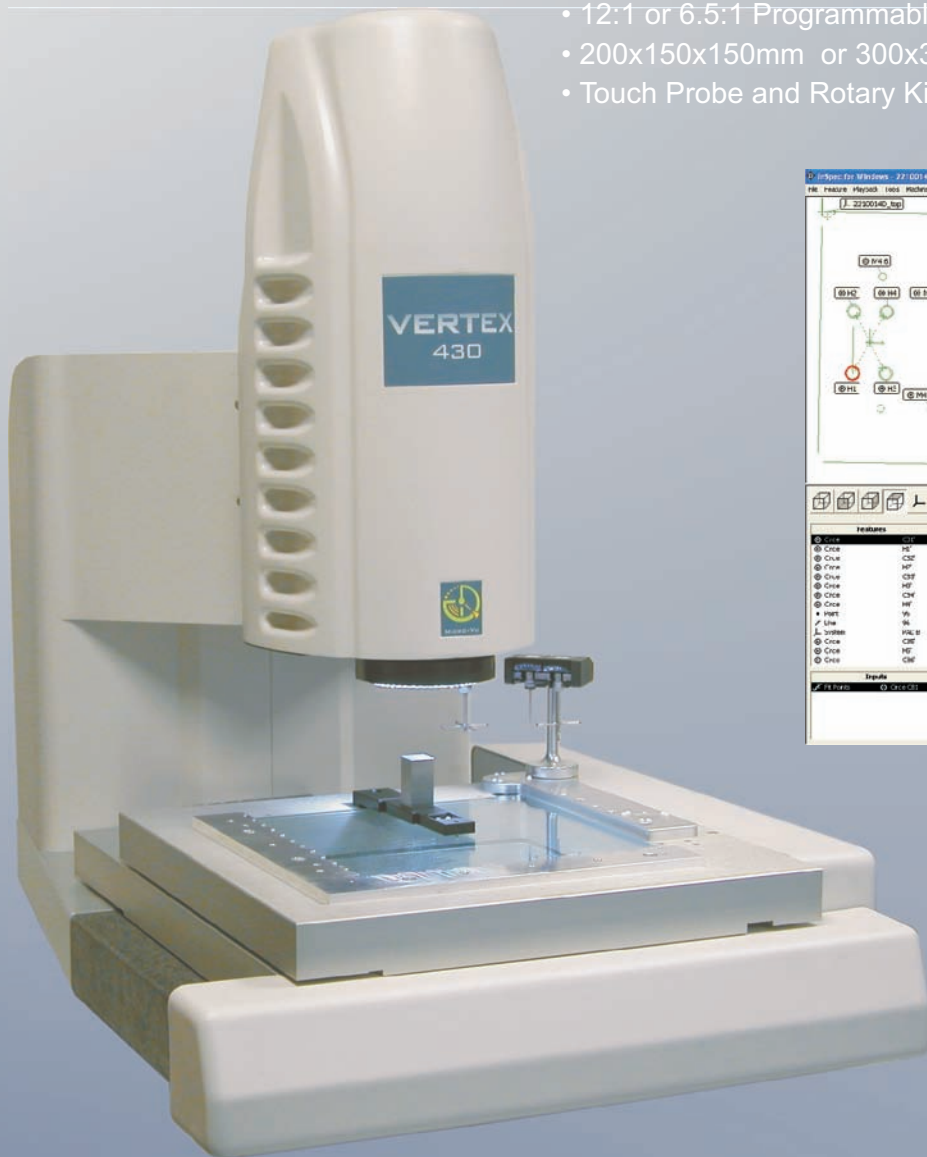
Advanced Lighting
High Speed and Accuracy
Powerful, Easy-to-Use Interface
For Small to Medium Sized Parts

MICRO-VU CORPORATION

PRECISION MEASUREMENT SYSTEMS

VERTEX MEASURING CENTER™

- High Resolution B&W or Color Video System
- 12:1 or 6.5:1 Programmable Zoom Lens
- 200x150x150mm or 300x300x150mm Volume
- Touch Probe and Rotary Kits Available



InSpec Metrology Software

- Powerful Yet Easy-to-Use
- Adaptive Vision Tools
- Point and Click Programming
- Easy Tolerancing and Reporting
- Advanced Focus Algorithms



Touch Probe Kits

- Automated Probe Calibrations
- Automatic Approach Vectoring
- Automatic Retract
- Adjustable Standoff Distances
- 2, 4, and 6 Station Probe Racks



PRODUCT HIGHLIGHTS

Lighting Features

- Intuitive Graphic Controls
- Ring, Sector, Segment Selection
- Long Life LEDs, ~10,000hrs
- White Lighting for Color
- Red Lighting for B&W



Micro-Vu Ring Lights

- Enhance Difficult-to-See Edges
- Macro: Focused Light at 27°-75°
5 Rings, 8 Sectors, 40 Segments
- Standard: Focused Light at 47°-75°
2 Rings, 8 Sectors, 16 Segments



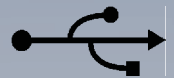
Monorail Design

- Large Primary Linear Way
- Superior Drive Stiffness
- Minimal Maintenance



State-of-the-Art Electronics

- USB Connection
- Multi-function Pendant
- DSP Technology
- On-Board Memory
- High Reliability



Rotary Indexer Kit

- Ready to Mount
- Seamless Software Integration
- Automated Rotary Calibration
- Includes Faceplate and Chuck



VERTEX MEASURING CENTER™

SPECIFICATIONS:

VERTEX MODELS	110,120,130	210,220,230	310,320,330	410,420,430
Measuring Volume	200x150x150mm		300x300x150mm	
Weight Capacity	7.5kg		12kg	
External Dimensions	760x635x965mm		1090x865x990mm	
Machine Weight	100kg		150kg	
Bearings	Steel Linear Ways			
Stage Material	Aluminum			
Base Material	Aluminum, Granite			

Accuracy (XY) ¹	2.0+L/250 µm	2.6+L/175 µm
Accuracy (Z) ²	3.0+L/150 µm	3.0+L/150 µm
Max. Acceleration	1400 mm/s ² (XY), 500mm/s ² (Z)	
Max. Velocity	350 mm/s (XY), 100 mm/s (Z)	
Encoder Resolution	1.0 µm, 0.5 µm, 0.1 µm	

Video	B&W Video	Color Video	B&W Video	Color Video
Profile, Axial, and Surface Lighting	Red LED Technology	White LED Technology	Red LED Technology	White LED Technology
Optics ³	6.5:1 Zoom Lens, 20x-130x or 40x to 260x 12:1 Zoom Lens, 15x-180x or 30x to 360x			
Software	InSpec Metrology Software			
Motion Control	Linear Servo, CNC, Mouse and Joystick			
Environmental	20°C +/-2°, 30-80% Humidity			
Power	93-264 VAC, 47-63 Hz, 10 Amp			

Notes:

1. Based on Micro-Vu Accuracy and Repeatability specification using 0.5µm encoders.
2. Mechanical accuracy of Z; focus accuracy depends on the part surface.
3. Onscreen magnification is approximate and depends on monitor size and resolution.

If You Can See It ...



We Can Measure It!



Micro-Vu Corporation

7909 Conde Ln. Windsor, CA 95492 USA
 Ph 707 838 6272 Fx 707 838 3985
 E-mail: sales@microvu.com
 Website: <http://www.microvu.com>

RFM

Resources For Manufacturing, Inc.

P.O. Box 751432 Dayton, OH 45475
 Ph: (937) 436-4699 Fx: (937) 436-9244
 Sales@RFMInc.net www.RFMInc.net