

SPECTRA

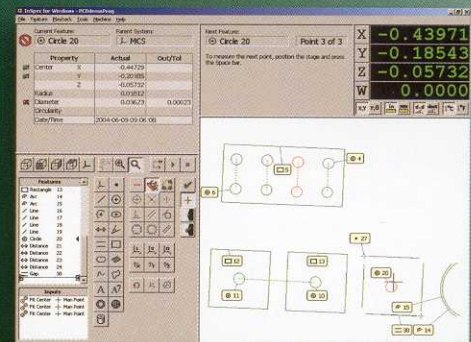
OPTICAL COMPARATORS

RFM

Resources For Manufacturing, Inc.



Large Capacity Measuring Stage
Quick Change 10x to 100x Lenses
Bench and Floor Models
Erect, Sharp Image



Available with InSpec
Metrology Software

MICRO-VU CORPORATION

PRECISION MEASUREMENT SYSTEMS

Specifications

Physical	Spectra Bench Optical	Spectra Floor Optical
Measuring Volume	300x150x75mm (12"x6"x3")	300x150x75mm (12"x6"x3")
External Dimensions	950x1075x1025mm (38"x43"x41")	950x1075x1775mm (38"x43"x71")
Weight	114kg (250lb)	146kg (325lb)
Capacity	9kg (20lb)	
Stage Surface	450x125mm (18"x5") With V-groove	
Stage Material	Steel Upper Table	
Ways X&Y	Steel Balls And Rods	

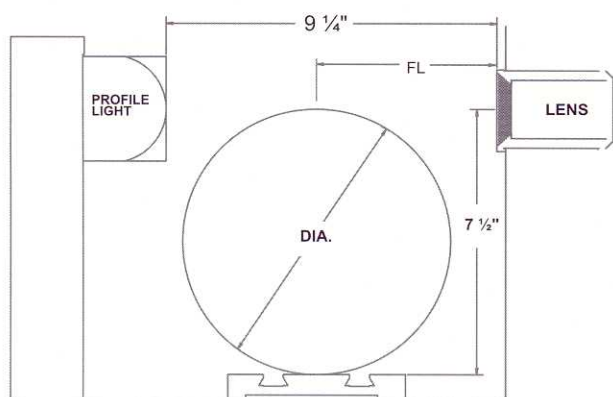
Performance	Spectra Bench Optical	Spectra Floor Optical
X & Y Accuracy	$U_x = 2.5 + L/25 \mu\text{m}$, $U_y = 2.5 + L/15$	
X & Y Repeatability	$U = 2.5 \mu\text{m}$	
X & Y Perpendicularity	12.5 μm (0.0005")	
Z Perpendicularity	7.5 μm (0.0003")	
Encoder Resolution	2.0 μm (0.000080")	

Features	Spectra Bench Optical	Spectra Floor Optical
Image	14" Erected, Bright And Sharp	
Profile Light	Condensed 100w Halogen	
Surface Light	Thru The Lens, 50w Halogen	
Lens / Magnification	10x, 20x, 31 1/4x, 40x, 50x, 100x	
Measuring System	Q16 Metrology Box or Optional InSpec Software	
Warranty	One Year	

Requirements	Spectra Bench Optical	Spectra Floor Optical
Environmental	20° C (68° F) $\pm 2^\circ$, 30-80% Humidity	
Power	110 or 220 Vac	

Repeatability Based On Micro-Vu Accuracy And Repeatability Specification Using 2.0 Micron Encoders

Spectra 14" Optical Comparator



Profile and Surface			
Mag	10X	20X	50X
FL	4.4"	2.2"	1.0"
DIA	7.5"	4.35"	2.25"

FL - Focal Length
DIA - Maximum Part Diameter



ROTARY VISE FIXTURE

- 360° Rotating Aluminum Base
- 1-1/2"x1-1/2" Jaw Steel Vise
- 4"x4"x2-1/2" Overall Size



VERTICAL FIXTURE

- Aluminum
- 4-1/2" Glass Aperture
- 6"x3-1/2"x1-3/4" Overall Size



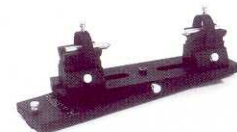
COMBINATION V-BLOCK AND CENTERS

- (2 each)
- Aluminum V-blocks; Steel Centers
 - 1-7/8" Radius Swing
 - 2"x2"x1-1/4" Overall Size



RISERS FOR V-BLOCKS

- (2 each)
- Aluminum Risers
 - 3-7/8" Radius Swing
 - 2"x1-3/4"x1-1/4" Overall Size



HELIX FIXTURE

- Aluminum
- 20° Swivel Angle
- 12-1/2"x2-1/2"x1" Overall Size



Micro-Vu Corporation

7909 Conde Ln. Windsor, CA 95492
Ph 707 838 6272 Fx 707 838 3985
E-mail: sales@microvu.com

www.microvu.com

RFM

07/04

Resources For Manufacturing, Inc.

P.O. Box 751432 Dayton, OH 45475
Ph: (937) 436-4699 Fx: (937) 436-9244
Sales@RFMInc.net www.RFMInc.net